

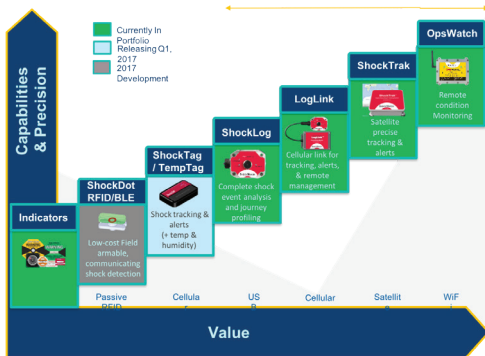
Log-IC User Manual



Contents

Log-IC Recorder Basics	2
Turning a Recorder On/Off.....	3
Checking the Status of a Tag.....	4
Log-IC USB	5
Proper Placement of LOG-IC.....	5
Optional Log-IC Desktop Readers.....	6

LOG-IC RECORDER BASICS



- _____ **Status Button**
- _____ **HI Excursion Display Window**
- _____ **Active Display Window**
- _____ **LO Excursion Display Window**
- _____ **ON/OFF Button**

In the following sections, the following symbols represent a solid LED light:

-  **SOLID RED**
-  **SOLID GREEN**

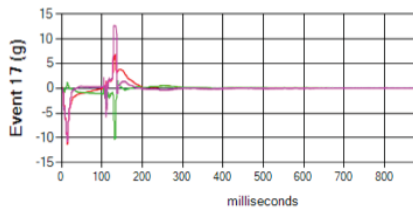
The following symbols represent a blinking LED light:

-  **BLINKING RED**
-  **BLINKING GREEN**

TURNING A RECORDER ON/OFF

There are several options for turning on/off Log-IC. The instructions below describe using the ON/ / OFF Button. In order to use the ON/OFF button on the front of the tag, the tag must be placed in standby mode and configured using the Log-IC Interface Application.

TURNING A TAG ON



Press the ON / OFF button between your forefinger and thumb. While pressing the button, view the Active display window. There will be a momentary solid green light displayed in the status window, indicating you have successfully turned the Log-IC tag on.

Once Log-IC is successfully turned on, the programmed startup delay (soaking) time will begin.

After the delay period has expired, the tag will begin recording time and temperature.

NOTE: If the ON button is pressed during the delay period, the delay period will start again. This feature prevents the tag from being turned off immediately after it was turned on.

To stop manually, press and hold the ON / OFF button between your forefinger and thumb for one full second. While pressing the ON / OFF button, view the Active LED display window. A green light will flash two times in the Active display window, indicating that the tag has been successfully turned off.

TURNING A TAG OFF



CHECKING THE STATUS OF A TAG

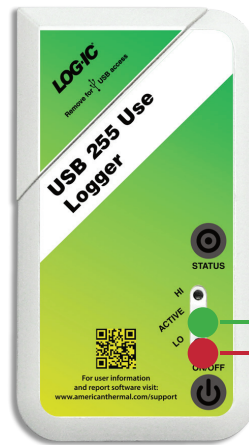
Press the Status button between your forefinger and thumb to check the current excursion status and tag mode.



You will see one of the following combinations from the LED display windows:



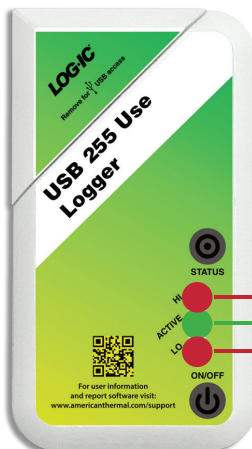
The tag is recording; no excursions have occurred.



The tag is recording and there has been a low (LO) excursion.



The tag is recording and there has been a high (HI) excursion.



The tag is recording and there has been a high and low excursion.



The tag is off, delayed/soaking or in standby.

LOG-IC USB

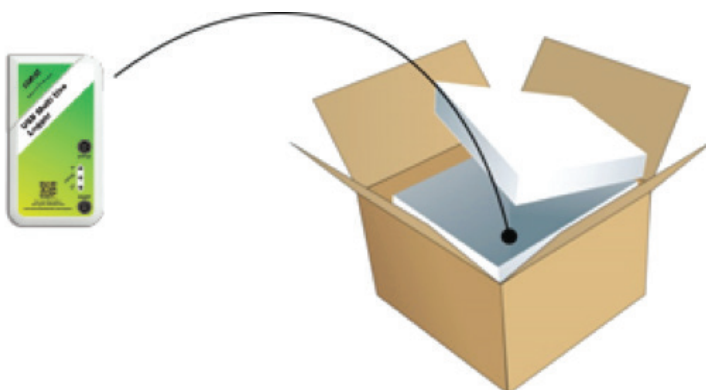
Log-IC tags communicate to the Log-IC Interface Application via USB port. To access the USB, remove the cover as shown and plug into an available PC USB port.



When connected, the tag LEDs will blink, confirming a successful connection. After the tag information is downloaded, replace the cover of the USB port for next use.

PROPER PLACEMENT OF LOG-IC

Log-IC are compact and durable. They can be used whenever a complete temperature history or temperature breach alert is necessary. As a general rule, the best placement of a monitoring device is as close to the product being monitored as possible.



Place the Log-IC tag inside the plastic shipping pouch, and place the plastic shipping pouch inside the shipping box.

OPTIONAL LOG-IC DESKTOP READERS

The desktop reader (DTR) offers the advantage of easy, fast downloading of recorded data. It is compact and connects to a PC via a USB cable.

Once the desktop reader is connected to a PC and the Log-IC Interface Application is open, hold the tag within two inches of the DTR. Be sure that the desktop reader is not near or on any metal objects (file cabinets, etc.) as this will cause interference with the RF signal. Do not leave a tag on the DTR for extended periods of time as this will damage the recorder.