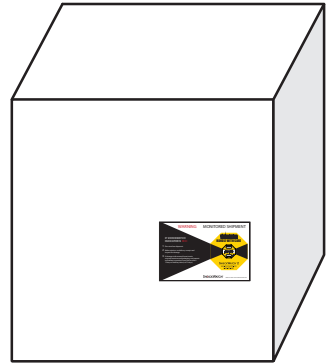
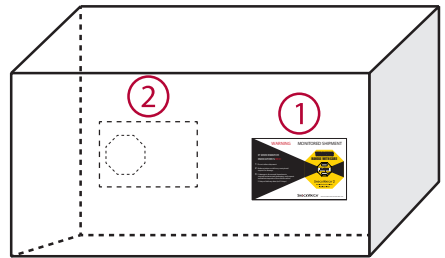


1. Mount the ShockWatch RFID Impact Indicator in the lower third of the package/pallet as close to the edge as possible. Avoid the center of the package because the mounting locations should be structurally sound.



2. If the package is twice as long as it is wide, use two ShockWatch RFID Impact Indicators. Place a second indicator in the same position on the opposite side of the package.



3. Place the Alert Sticker on your bill of lading as a reminder to receivers to check the ShockWatch RFID indicator immediately upon arrival.
4. While these instructions are considered best practices, each situation may be different. If you have any questions please contact your SpotSee Sales representative or call +1 (800) 466-0101 or email [techsupport@spotsee.io](mailto:techsupport@spotsee.io)
5. To reorder, call (800) 846-2468 or email [orders@spotsee.io](mailto:orders@spotsee.io)